



#### DETTAGLI

- Elastico e coulisse in vita
- 2 tasche davanti
- 1 tasca sul retro

#### TAGLIE

XS ÷ 5XL  
Slim Fit

#### COLORE

U32 Nero

#### TESSUTO

65% poliestere  
35% cotone  
200 g / m<sup>2</sup>



Le misure indicate si riferiscono alle taglie **S** per i capi femminili, **L** per i capi maschili. Per i capi a taglia unica le misure indicate sono effettive.

Il pantalone Plutone presenta tasche laterali alla francese, una tasca nel retro e una coulisse in tinta con i puntelli plastificati. È realizzato in gabardina 100% cotone nel bianco, in 65% poliestere 35% cotone nel nero, e in cotone 200 g / m<sup>2</sup> nella variante principe di Galles.

#### COLORI DISPONIBILI



U32 Nero

TABELLE TAGLIE  
E CORRISPONDENZE

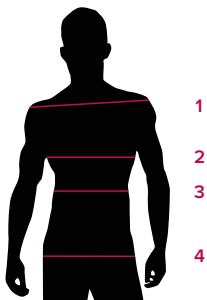


TABELLA ST-P2 SLIM FIT

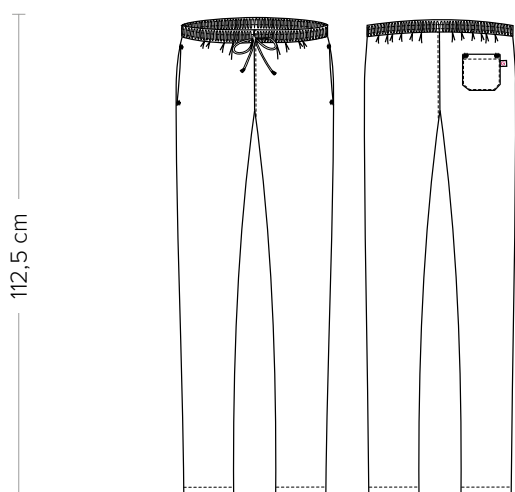
| TAGLIA     | XXS   | XS    | S      | M       | L       | XL      | XXL     | 3XL     | 4XL     | 5XL     |
|------------|-------|-------|--------|---------|---------|---------|---------|---------|---------|---------|
| 1 - SPALLE |       |       |        |         |         |         |         |         |         |         |
| 2 - TORACE |       |       |        |         |         |         |         |         |         |         |
| 3 - VITA   | 72-81 | 81-85 | 85-89  | 89-93   | 93-97   | 97-103  | 103-109 | 109-115 | 115-121 | 121-129 |
| 4 - BACINO | 87-91 | 91-95 | 95-100 | 100-104 | 104-108 | 108-115 | 115-121 | 121-127 | 127-133 | 133-140 |

**GUIDA ALLE TAGLIE** **1)** Prendere le misure anatomiche (corpo con abbigliamento intimo) senza stringere mantenendo ben teso il metro. **Nota:** nel caso vogliate indossare dei camici già con dell'abbigliamento sotto prendete le misure già abbigliati. **2)** Nel caso tra le misure prese vi fosse una misura a cavallo fra 2 taglie vi consigliamo di prendere quella più grande. **3)** Le misure della tabella sono espresse in centimetri.

# PLUTONE

ITEM CODE  
Q8P00194

**Giblor's**  
italian work/life specialist



## DETAILS

- Elasticated waistband with drawstring
- 2 front pockets
- 1 rear pocket

## SIZES

XS ÷ 5XL  
Slim Fit

## COLOURS

U32 Black

## FABRIC

65% polyester  
35% cotton  
200 g / m<sup>2</sup>



The measures indicated refer to sizes **S** for women, **L** for men. For one-size-fits-all garments, the measurements indicated are effective.

The Plutone trousers have French side pockets, a back pocket and a drawstring in the same color as the plasticized props. It is made of 100% cotton gabardine in white, 65% polyester 35% cotton in black, and 200 g / m<sup>2</sup> cotton in the Prince of Wales variant.

## AVAILABLE COLOURS



U32 Black

SIZE TABLES  
AND CORRESPONDENCES

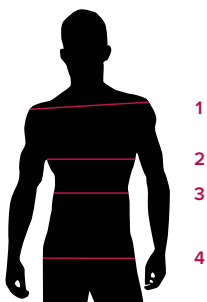


TABLE ST-P2 SLIM FIT

| SIZE          | XXS   | XS    | S      | M       | L       | XL      | XXL     | 3XL     | 4XL     | 5XL     |
|---------------|-------|-------|--------|---------|---------|---------|---------|---------|---------|---------|
| 1 - SHOULDERS |       |       |        |         |         |         |         |         |         |         |
| 2 - CHEST     |       |       |        |         |         |         |         |         |         |         |
| 3 - WAIST     | 72-81 | 81-85 | 85-89  | 89-93   | 93-97   | 97-103  | 103-109 | 109-115 | 115-121 | 121-129 |
| 4 - HIPS      | 87-91 | 91-95 | 95-100 | 100-104 | 104-108 | 108-115 | 115-121 | 121-127 | 127-133 | 133-140 |

**SIZE GUIDE** **1)** Take the anatomical measurements (body with underwear) without tightening, keeping the measuring tape taut. Note: in case you want to wear of the gowns already with the clothing underneath take the measurements already dressed. **2)** If there is a measure between 2 sizes between the measurements taken, we advise you to take the bigger one. **3)** The measurements in the table are expressed in centimeters.